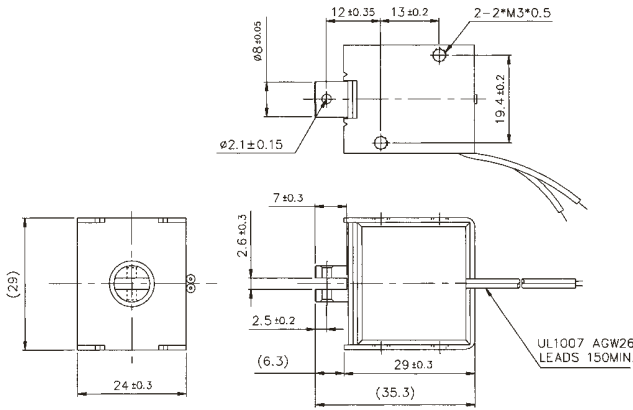
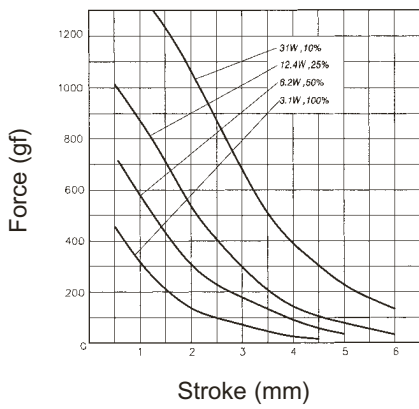


SDO-0829L

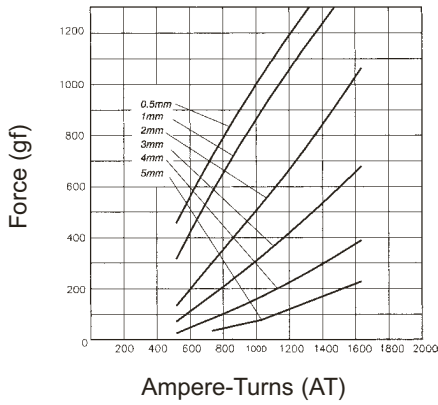


Solenoid Weight 91g – Plunger Weight 9g

STROKE Vs FORCE

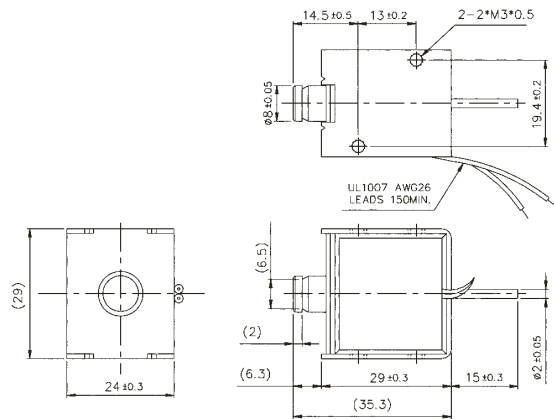


AMPERE-TURNS Vs FORCE



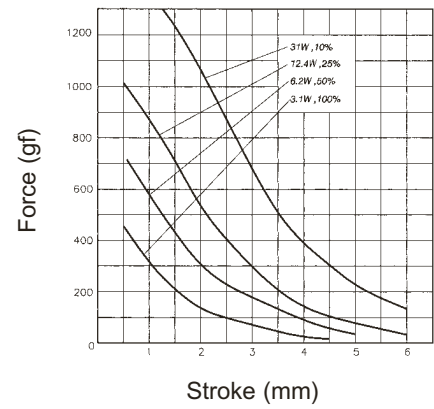
Maximum Duty Cycle (%)		Continuous	50%	25%	10%	
MAX. "on" time in seconds		∞	100	36	7	
Watts at 20°C		3.1	6.2	12.4	31	
Ampere-turns at 20°C		516	731	1032	1635	
Type no.	Resistance (20°C) Ω+10%	No. turns	Volts DC			
SDO-0829L06—	11.6	998	6	8.5	12	19
SDO-0829L12—	46.5	2000	12	17	24	38
SDO-0829L24—	186	4000	24	34	48	76
SDO-0829L48—	743	7987	48	68	96	152

SDO-0829S

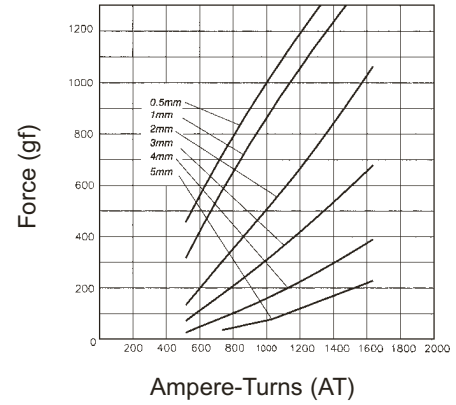


Solenoid Weight 91g – Plunger Weight 9g

STROKE Vs FORCE



AMPERE-TURNS Vs FORCE



Maximum Duty Cycle (%)		Continuous	50%	25%	10%	
MAX. "on" time in seconds		∞	100	36	7	
Watts at 20°C		3.1	6.2	12.4	31	
Ampere-turns at 20°C		516	731	1032	1635	
Type no.	Resistance (20°C) Ω+10%	No. turns	Volts DC			
SDO-0829S06—	11.6	998	6	8.5	12	19
SDO-0829S12—	46.5	2000	12	17	24	38
SDO-0829S24—	186	4000	24	34	48	76
SDO-0829S48—	743	7987	48	68	96	152