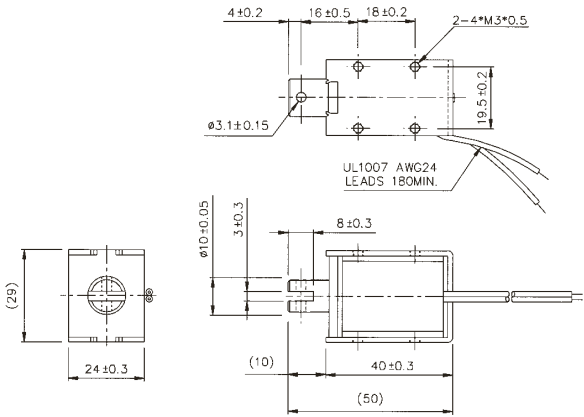
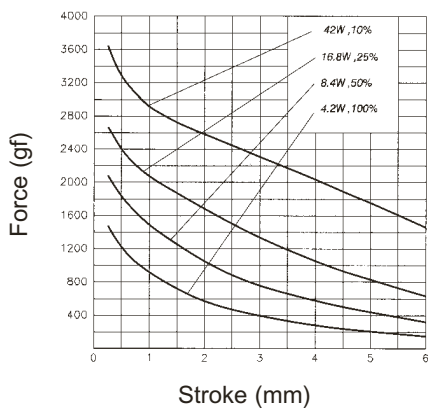


SDO-1040L

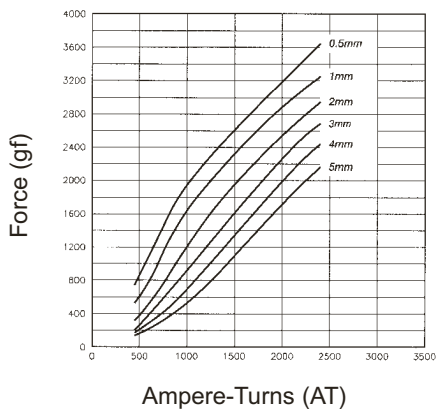


Solenoid Weight 122g – Plunger Weight 22g

STROKE Vs FORCE

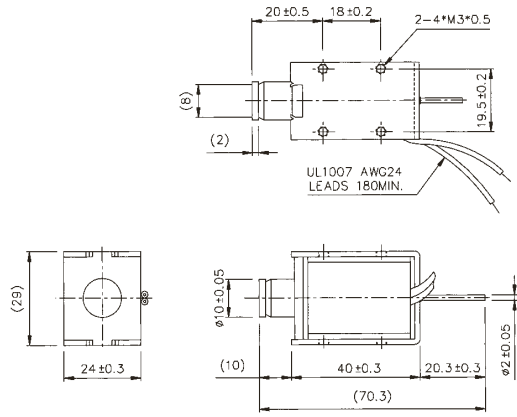


AMPERE-TURNS Vs FORCE



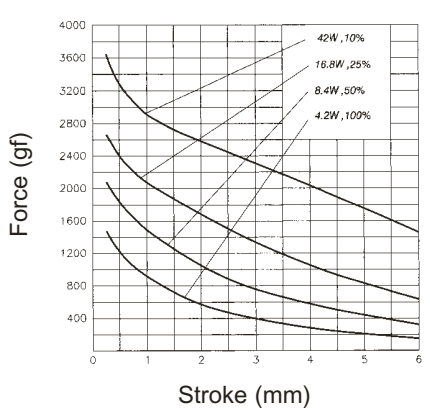
Maximum Duty Cycle (%)	Continuous		50%	25%	10%
MAX. "on" time in seconds	∞		100	36	7
Watts at 20°C	4.2		8.4	16.8	42
Ampere-turns at 20°C	655		925	1310	2075
Type no.	Resistance (20°C) Ω+10%	No. turns	Volts DC		
SDO-1040L06—	8.6	930	6	8.5	12 19
SDO-1040L12—	34	1900	12	17	24 38
SDO-1040L24—	137	3690	24	34	48 76
SDO-1040L48—	548	7590	48	68	96 152

SDO-1040S

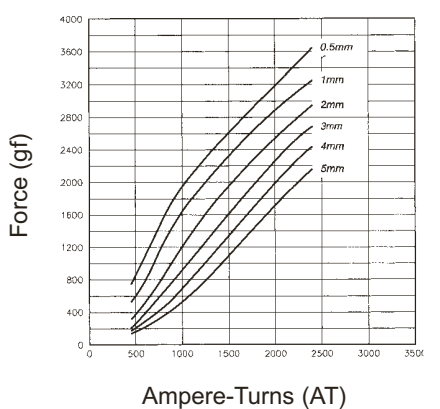


Solenoid Weight 122g – Plunger Weight 22g

STROKE Vs FORCE



AMPERE-TURNS Vs FORCE



Maximum Duty Cycle (%)	Continuous		50%	25%	10%
MAX. "on" time in seconds	∞		100	36	7
Watts at 20°C	4.2		8.4	16.8	42
Ampere-turns at 20°C	655		925	1310	2075
Type no.	Resistance (20°C) Ω+10%	No. turns	Volts DC		
SDO-1040S06—	8.6	930	6	8.5	12 19
SDO-1040S12—	34	1900	12	17	24 38
SDO-1040S24—	137	3690	24	34	48 76
SDO-1040S48—	548	7590	48	68	96 152